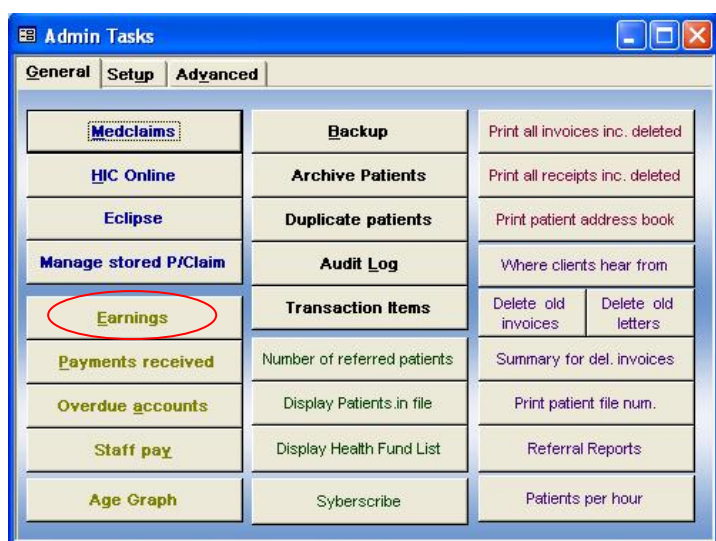


# Practice Health Atlas (PHA)

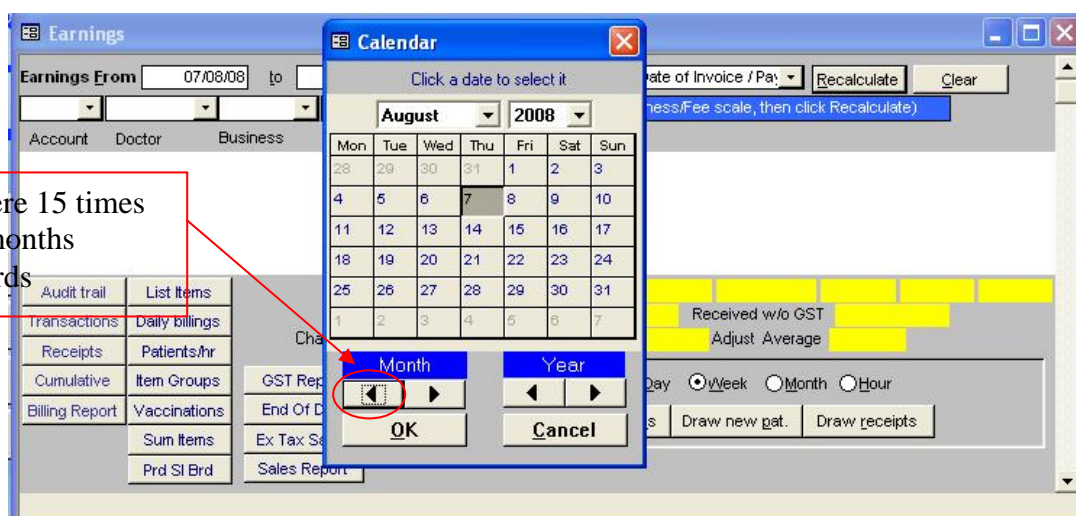
## Practice 2000: Instructions for extracting MBS Item Number

The report will provide you with the item numbers, number of items and total amount paid to the practice for the specified time period.

1. Open Practice 2000
2. From the Main form, click Admin Tasks

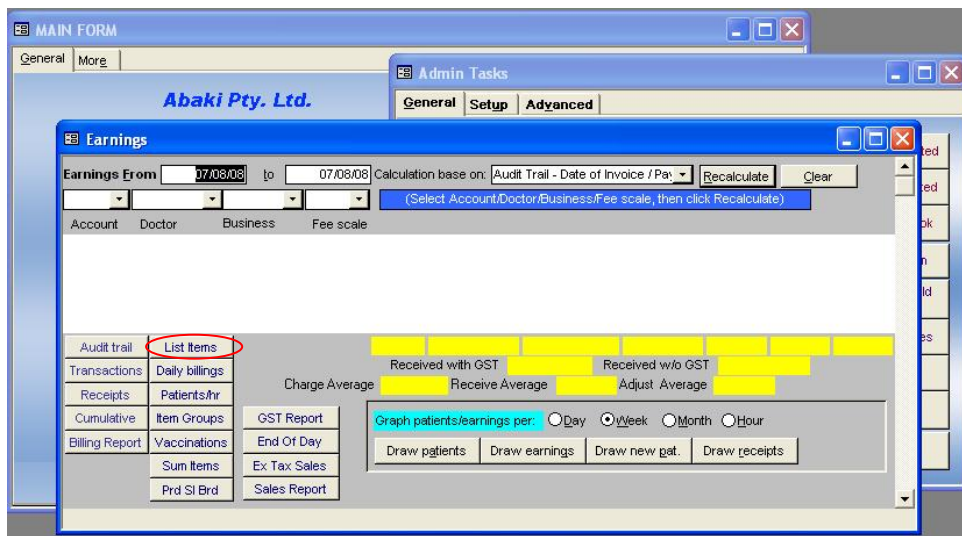


3. Click Earnings
4. Double click on the start date to display the calendar, select the date then click **OK**

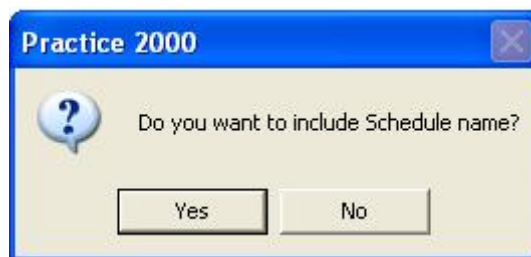


5. Click Recalculate

6. Click List items



7. When asked if you want to include Schedule name, click Yes



8. When asked if you want to export to Excel



Click **No** to display the list on the screen

Click **Yes** to export to Excel

9. If select Yes, enter the path to export, click **OK**

